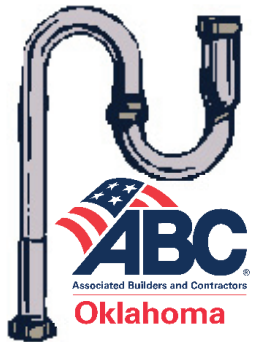




ELECTRICAL & PLUMBING APPRENTICESHIP TRAINING PROGRAMS



For information, enrollment forms and the calendar go to www.abcokla.org under Education click Apprenticeship.

**Enrollment
July 15 to August 15**

**Classes start the first
Monday in September after
Labor Day at 5:00pm**

**ABC of Oklahoma's
Training Program is accredited
through NCCER, provides education
for Craft Training Students and
registered Apprenticeship Students
with the DOL, and hours
are accepted by the CIB.**

Apprenticeship Program Overview

ABC's Electrical Apprenticeship is a four year program with 160 hours per year of classroom instruction. ABC's Plumbing Apprenticeship is a two year program with 170 hours per year of classroom instruction. Classes are held one night per week.

Apprentices receive on-the-job practical instruction working full time under the supervision of licensed Journeymen. They receive instruction from certified instructors one night a week at Apprenticeship Classes.

Associated Builders & Contractors of Oklahoma

Becky Taylor, Vice President | Education

2 Locations

1915 N. Yellowwood Ave.
Broken Arrow, OK 74012

505 NE 46th Street
Oklahoma City, OK 73105

Phone: (918) 254-8707 | Fax: (918) 252-5949
btaylor@abcokla.org | www.abcokla.org

Apprenticeship/Craft Trainer

An apprentice/craft trainer is a unique education opportunity where students gain specific skills and knowledge related to a trade/craft. Training combines supervised daily on-the-job instruction with your employer and classroom instruction in the evening at ABC of Oklahoma.

Fees

Tuition is per year and is billed quarterly to the employer/training sponsor. Financial arrangements between the Apprentice and the Training Sponsor are individual and depend on their agreement.

Tuition

ABC Member Firms - \$1,550 per year
Non-Member Firms - \$2,050 per year

Tuition is billed quarterly at \$387.50 per ABC member firm or \$512.50 per non-member firm. Fees do not include textbooks.

Test Out Schedule

The electrical test out test will be given to all first year electrical students the first night of class. The minimum passing test out grade is 80%. This is the only time the test out test is given. Test out is only available for the first year.

The plumbing program is a two year program and test-out is not available.

Unemployed Student

If a student does not have an employer or training sponsor payment must be made prior to the start of the quarter. ABC will notify training contractors of available apprentices ONLY after receiving completed enrollment information.

(Prices are subject to change)

Electrical & Plumbing Curriculum - Level 1

Core Curriculum:
Introductory Craft Skills

Basic Safety
Introduction to Construction Math
Introduction to Hand Tools
Introduction to Power Tools
Introduction to Construction Drawings
Introduction to Basic Rigging
Basic Communication Skills
Basic Employability Skills
Introduction to Material Handling

Electrical Level 1

Orientation to the Electrical Trade
Electrical Safety
Introduction to Electrical Circuits
Electrical Theory
Introduction to the National Electrical Code ®
Device Boxes
Hand Bending
Raceways and Fittings
Conductors and Cables
Basic Electrical Construction Drawings
Residential Electrical Services
Electrical Test Equipment

Plumbing - Level 1

Introduction to the Plumbing Profession
Plumbing Safety
Tools of the Plumbing Trade
Introduction to Plumbing Math
Introduction to Plumbing Drawings
Plastic Pipe and Fittings
Copper Pipe and Fittings
Cast-Iron Pipe and Fittings
Carbon Steel Pipe and Fittings
Introduction to Plumbing Fixtures
Introduction to Drain, Waste, and Vent (DWV) Systems
Introduction to Water Distribution Systems



Electrical - Level 2

Alternating Current
Motors: Theory and Application
Electric Lighting
Conduit Bending
Pull and Junction Boxes
Conductor Installations
Cable Tray
Conductor Terminations and Splices
Grounding and Bonding
Circuit Breakers and Fuses
Control Systems and Fundamental Concepts



Plumbing - Level 2

Plumbing Math Two
Reading Commercial Drawings
Structural Penetrations, Insulation and Firestopping
Installing and Testing DWV Piping
Installing Roof, Floor and Area Drains
Types of Valves
Installing and Testing Water Supply Piping
Installing Fixtures and Valves
Basic Electricity
Installing Water Heaters
Fuel Gas Systems



Plumbing Additional Curriculum

(optional, time permitting)

Applied Math
Sizing and Protecting the Water Supply System
Potable Water Supply Treatment
Types of Venting
Sizing DWV and Storm Systems
Sewage Pumps and Sump Pumps
Corrosive-Resistant Waste Piping
Compressed Air
Service Plumbing

Electrical - Level 3

Load Calculations – Branch and Feeder Circuits
Conductor Selection and Calculations
Practical Applications of Lighting
Hazardous Locations
Overcurrent Protection
Distribution Equipment
Transformers
Commercial Electrical Services
Motor Calculations
Voice, Data, and Video
Motor Controls



Electrical - Level 4

Load Calculations – Feeders and Services
Health Care Facilities
Standby and Emergency Systems
Basic Electronic Theory
Fire Alarm Systems
Specialty Transformers
Advanced Controls
HVAC Controls
Heat Tracing and Freeze Protection
Motor Operation and Maintenance
Medium-Voltage Terminations/Splices
Special Locations
Fundamentals of Crew Leadership

Notice Of Nondiscriminatory Policy As To Students

The Associated Builders and Contractors of Oklahoma Apprenticeship school admits students of any race, color, national and ethnic origin to all the rights, privileges, programs, and activities generally accorded or made available to students at the school. It does not discriminate on the basis or race, color, national and ethnic origin in administration of its educational policies, admissions policies, and other school-administered programs.

Revised 2/15/23